

# Mounting boxes

## Standard series to 650°C, flush mounting, normal

PP

Norm: PN-EN 60670-1

PK60 lux



A.0001A
A.0001AP
650°

Ø
C
D
IP30
#

Ø63mm    40mm    60mm    50

Remarks:

PK60 lux with screws



A.0002
A.0002P
650°

Ø
C
D
IP30
#

Ø63mm    40mm    60mm    50

Remarks:

PK60 lux with screws and cover



A.0002D
A.0002DP
650°

Ø
C
D
IP30
#

Ø63mm    40mm    60mm    50

Remarks: Ø cover: 81 mm

## Standard series to 650°C, flush mounting, normal

PP

Norm: PN-EN 60670-1

PK60



A.0001

Ø
C
IP30
650°
#

Ø63mm    40mm    50

Remarks:

P070



A.0003
650°

Ø
C
IP30
PP
#

Ø74mm    38mm    66

Remarks: Norm: PN-EN 60670-1

P080



A.0004
650°

Ø
C
IP30
PP
#

Ø84mm    44mm    54

Remarks: Norm: PN-EN 60670-1

## Standard series to 650°C, flush mounting, normal

### PK50 flush mounting



A.0055



Ø50mm



55mm



IP30



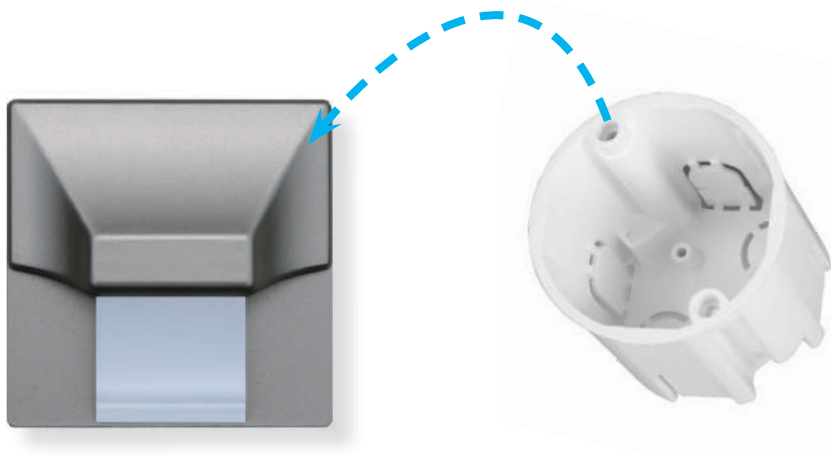
ABS



50

Remarks: for LED lamps, Norm: PN-EN 60670-1

Boxes Ø50 (A.0055 and A.0056) are perfect for mounting STARS LINE LED series by PAWBOL  
Full range of decorative STARS LINE LED lights series later in the catalog (Group D)



Its small size - Ø50 boxes find their application for the installation of small electrical components: ringtones household type, sensors, etc.



# Mounting boxes

Standard series to 650°C, flush mounting, junction

IP30

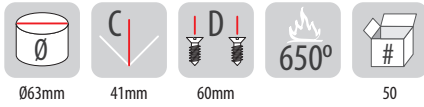
PP

Norm: PN-EN 60670-1

PK60 junction, shallow



A.0005B      A.0005BP

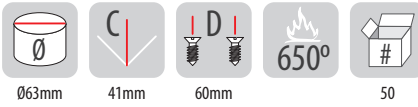


Remarks:

PK60 junction, shallow with screws



A.0005      A.0005P

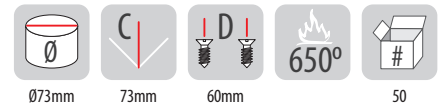


Remarks:

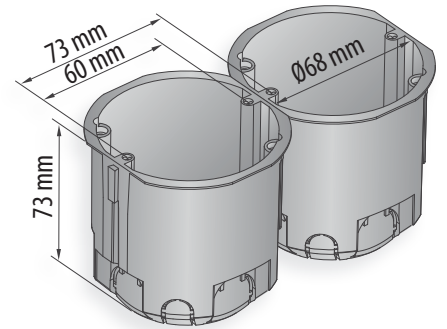
Junction, deep with screws



A.0006P/68



Remarks:



## PK60 lux mounting boxes – deep with screws. New solutions. New quality.

PAWBOL PK 60 lux mounting boxes it's a comfort of installations in all conditions

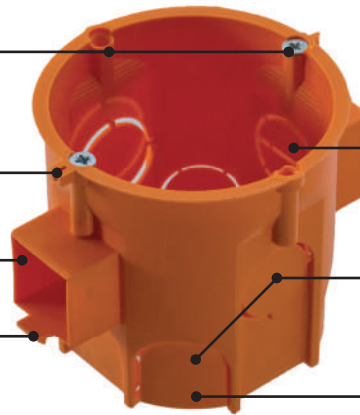
- » high stiffness enables easier box installation
- » easy to break large culverts allow introduction of a wider range of wires and casing pipes
- » plenty of space for cable routing
- » possibility to combine multiple boxes in a one row (in junction version)
- » stable connection for boxes in junction version - with an additional connection at the top of the can
- » Compatible with lids attached by using screws and ferruls
- » 4 screw slots allow for stable mounting of accessories

Slots for screws for attaching accessories

Additional mountings, stiffening a couple of boxes

The main mount allows stable connection of many boxes

Safety catch preventing the sliding down of the boxes



Passages inside connectors for easy routing of cable between the connected boxes

Easy to break culverts placed at two levels

Large grommets for easy cable entry

PP

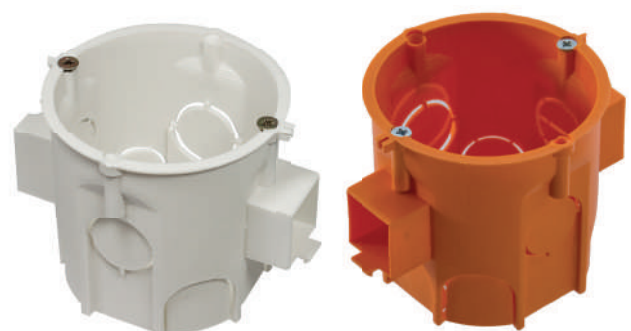
## PK60 lux junction boxes, deep

Norm: PN-EN 60670-1

PK60 lux, deep



PK60 lux junction, deep



with screws

without screws

A.0001BL

A.0001BLP

A.0001LD

A.0001LDP



Ø63mm



62mm



60mm



IP30



50



650°

Remarks:

A.0006BL

A.0006BLP

A.0006L

A.0006LP



Ø63mm



62mm



60mm



IP30



50



650°

Remarks:

# Mounting boxes

## Standard series to 650°C, flush mounting, n-row

PP

Norm: PN-EN 60670-1

PK60 2-row with screws



A.0042W
  A.0042WP
 
 🔥  
650°

B  
↙ ↘
 

 C  
↙ ↘
 

 D  
⬆ ⬆
 

 IP30
 

 #

2x68mm
46mm
60mm
36

PK60 3-row with screws



A.0043W
  A.0043WP
 
 🔥  
650°

B  
↙ ↘
 

 C  
↙ ↘
 

 D  
⬆ ⬆
 

 IP30
 

 #

3x68mm
46mm
60mm
10

PK60 4-row with screws



A.0049W
  A.0049WP
 
 🔥  
650°

B  
↙ ↘
 

 C  
↙ ↘
 

 D  
⬆ ⬆
 

 IP30
 

 #

4x68mm
46mm
60mm
6

## Standard series to 650°C, flush mounting, n-row, deep

PP

Norm: PN-EN 60670-1

PK60 2-row with screws, deep



A.0042WPG
 
 🔥  
650°

B  
↙ ↘
 

 C  
↙ ↘
 

 D  
⬆ ⬆
 

 IP30
 

 #

2x68mm
60mm
60mm
12

PK60 3-row with screws, deep



A.0043WPG
 
 🔥  
650°

B  
↙ ↘
 

 C  
↙ ↘
 

 D  
⬆ ⬆
 

 IP30
 

 #

3x68mm
60mm
60mm
6

PK60 4-row with screws, deep



A.0049WPG
 
 🔥  
650°

B  
↙ ↘
 

 C  
↙ ↘
 

 D  
⬆ ⬆
 

 IP30
 

 #









4x68mm
60mm
60mm
6

PP

Norm: PN-EN 60670-1

PK60 5-row with screws

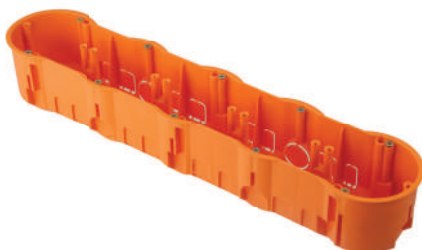








|   |   |   |
|---|---|---|
|  A.0048W      |  A.0048WP   |  650°        |
|  B<br>5x68mm |  C<br>46mm |  D<br>60mm |
|  IP30        |            | 6   |

PP

Norm: PN-EN 60670-1

PK60 5-row with screws, deep



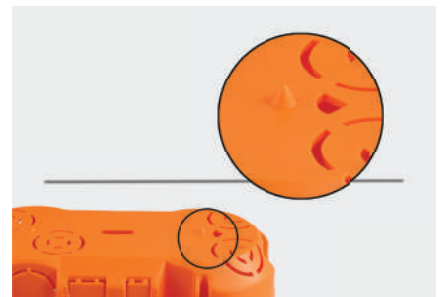
|   |   |
|---|---|
|  A.0048WPG   |  650°      |
|  B<br>5x68mm |  C<br>60mm |
|  D<br>60mm   |            |

## Intuitive installation of multiple boxes

Mark a line on a drywall, in place where you want to install a box.



The lower surface of the multiple boxes contain triangular window indicating the symm line of the box. Underside of the box also have small pins - markers - used to designate the center of the drilling.



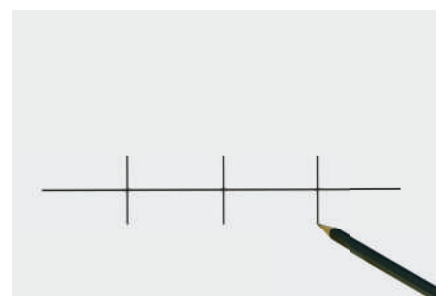
Place the box to the drawn line, so that the line is visible in the center of the triangular windows located on the underside of the box.



Lightly hit the bottom of the box with the hammer helve. This will make dents on plasterboard in places where are the marks for drilling. This will dent the plasterboard in places where there are markers of drilling.



Mark clearly the place of drilling and witch special bit drill holes into the multiple box.



# Mounting boxes

## Standard series to 650°C, for gypsum walls

PP  
PS

Norm: PN-EN 60670-1

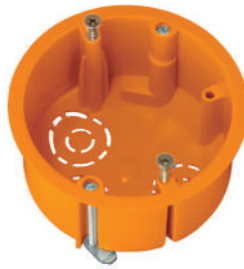
PK60 for gypsum walls



|        |         |      |
|--------|---------|------|
| A.0046 | A.0046P |      |
| Ø68mm  | 45mm    | 60mm |
|        |         | 50   |

Remarks:  
Norm: PN-EN 60670-1

Box KUP68 for gypsum walls



|         |      |      |
|---------|------|------|
| A.1068P |      |      |
| Ø72mm   | 46mm | 60mm |
|         |      | 50   |

Remarks:  
Norm: PN-EN 60670-1

PK60 for gypsum walls, deep



|        |         |      |
|--------|---------|------|
| A.0044 | A.0044P |      |
| Ø68mm  | 60mm    | 60mm |
|        |         | 50   |

Remarks:  
Norm: PN-EN 60670-1

## Standard series to 650°C, for gypsum walls

PP  
PS

P070 for gypsum walls



|        |         |    |
|--------|---------|----|
| A.0008 | A.0008P |    |
| 73mm   | 46mm    |    |
|        |         | 70 |

Remarks:  
Norm: PN-EN 60670-1

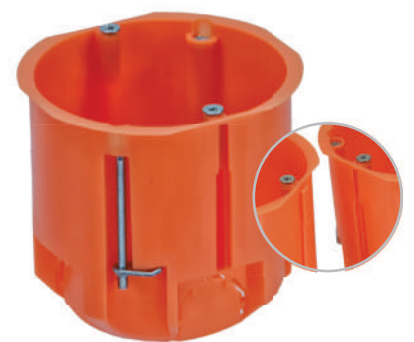
P080 for gypsum walls



|        |         |    |
|--------|---------|----|
| A.0009 | A.0009P |    |
| 83mm   | 49mm    |    |
|        |         | 60 |

Remarks:  
Norm: PN-EN 60670-1

PK60 junction, for gypsum walls, deep, with screws



|            |      |
|------------|------|
| A.0040P/68 |      |
| 73mm       | 73mm |
| 60mm       |      |
|            | 50   |

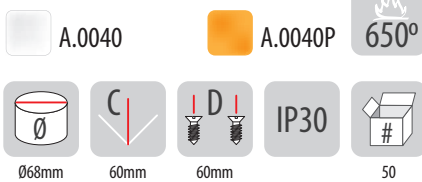
Remarks:

PP  
PS

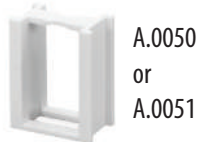
Norm: PN-EN 60670-1

## Junction boxes for gypsum walls

PK60 junction, for gypsum walls, deep

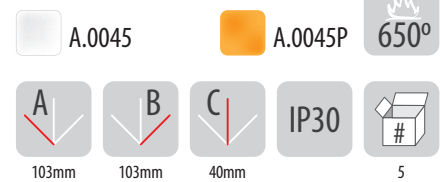


Remarks:



Example of installation: two junction boxes  
A.0040P assembled using couplers  
A.0050 or A.0051

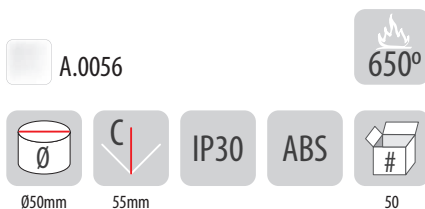
PO 100x100x40 for gypsum walls



Remarks:  
Norm: PN-EN 60670-1

## Junction boxes for gypsum walls for LED Lamps

PK50 for gypsum walls



Remarks: for LED lamps  
Norm: PN-EN 60670-1



Most of mounting boxes of PAWBOL was registered in the Polish Patent Office.

Registration rights of industrial designs relate to originality in shape, surface quality and color.



# Mounting boxes

Standard series to 650°C, for gypsum walls, n-row

PP

Norm: PN-EN 60670-1

PK60 2-row with screws



|        |         |      |
|--------|---------|------|
| A.0010 | A.0010P |      |
| B      | C       | D    |
| 2x68mm | 46mm    | 60mm |
|        |         | IP30 |
|        |         | #    |
|        |         | 36   |

PK60 3-row with screws



|        |         |      |
|--------|---------|------|
| A.0041 | A.0041P |      |
| B      | C       | D    |
| 3x68mm | 46mm    | 60mm |
|        |         | IP30 |
|        |         | #    |
|        |         | 10   |

PK60 4-row with screws



|        |         |      |
|--------|---------|------|
| A.0047 | A.0047P |      |
| B      | C       | D    |
| 4x68mm | 46mm    | 60mm |
|        |         | IP30 |
|        |         | #    |
|        |         | 6    |

Standard series to 650°C, for gypsum walls, n-row, deep

PP

Norm: PN-EN 60670-1

PK60 2-row with screws, deep



|          |      |
|----------|------|
| A.0010PG |      |
| B        | C    |
| 2x68mm   | 60mm |
|          | D    |
|          | 60mm |
|          | IP30 |
|          | #    |
|          | 12   |

PK60 3-row with screws, deep



|          |      |
|----------|------|
| A.0041PG |      |
| B        | C    |
| 3x68mm   | 60mm |
|          | D    |
|          | 60mm |
|          | IP30 |
|          | #    |
|          | 6    |

PK60 4-row with screws, deep











|          |      |
|----------|------|
| A.0047PG |      |
| B        | C    |
| 4x68mm   | 60mm |
|          | D    |
|          | 60mm |
|          | IP30 |
|          | #    |
|          | 6    |

PP

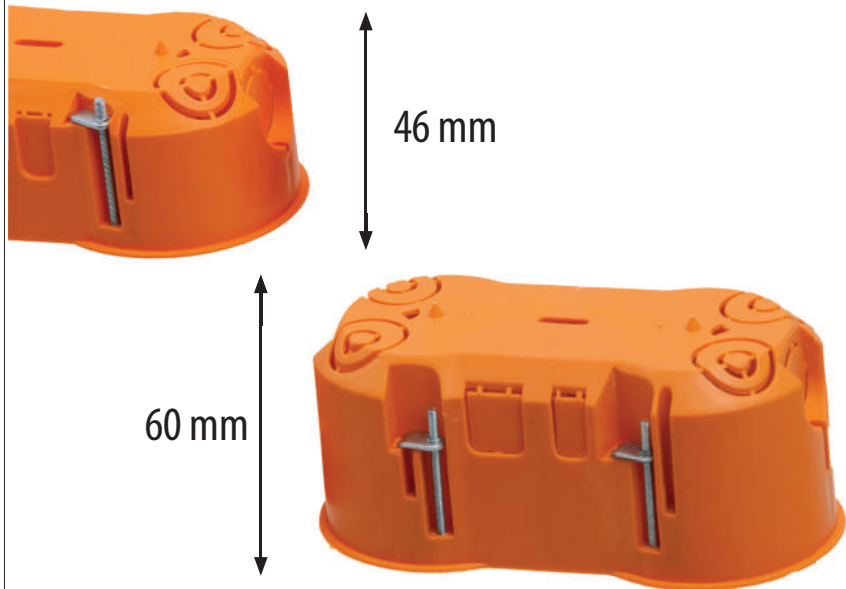
Norm: PN-EN 60670-1

PK60 5-row with screws

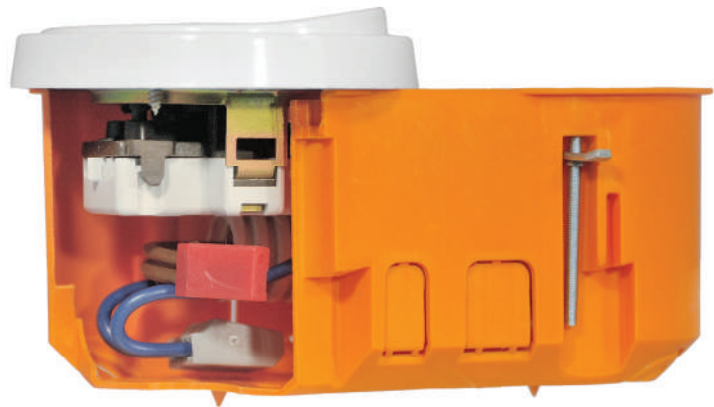


|   |   |   |
|---|---|---|
|  A.0048       |  A.0048P    |  650°       |
|  B<br>5x68mm |  C<br>46mm |  D<br>60mm |
|  IP30        |            | 6   |

## Mounting boxes for gypsum walls, n-row – shallow and deep



You can see the difference! More space = more convenient installation!



Boxes for gypsum walls have special screws with hooks that allow you to much faster twisting the fixing catch in the wall.

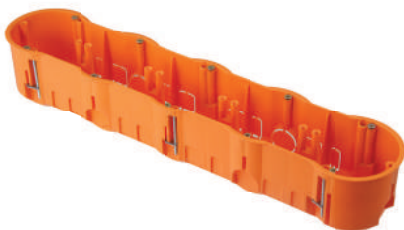
In addition, these boxes have a special collar around the body that facilitates boxes assembly to the gypsum wall







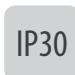


PP

Norm: PN-EN 60670-1

PK60 5-row with screws, deep



|   |   |
|---|---|
|  A.0048PG    |  650°      |
|  B<br>5x68mm |  C<br>60mm |
|  D<br>60mm   |            |
|  IP30        | 6   |

# Mounting boxes



## RED SERIES - HALOGEN FREE BOXES

Series of halogen-free mounting boxes meets the requirements of the PN-EN 60670-1

Features of halogen-free boxes in a red series:

- » **Halogen-free** - means that the product does not contain harmful elements such as chlorine, fluorine or bromine.
- » **Flame retardancy** - means that after the cessation of fire, box automatically goes out, moreover, in case of fire, boxes do not transmit the flames.

Why is this so important?

During a fire, building materials made of polymer, give off gases as a result of the decomposition of these materials. Extremely dangerous are the halogen gas derivatives, especially hydrogen chloride, which in contact with water transforms to hydrochloric acid. These gases pose a very serious threat to the health and life of humans, and have negative impact for the structure of buildings in the fire zone and adjacent areas.

The harmful gases are moving to threatened places via air ducts, chimneys and cable channels.

This threat is particularly important in public buildings, such as office buildings, supermarkets, railway stations or schools.

PP

PP-flame retardant

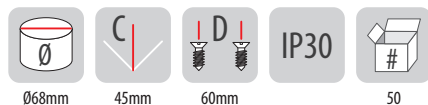
Norm: PN-EN 60670-1 Remarks: self-extinguishing

## Halogen free series to 850°C, for gypsum walls

PK60 for gypsum walls, with screws



 A.0046A

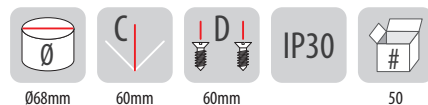


Remarks:

PK60 for gypsum walls, deep, with screws



 A.0044A

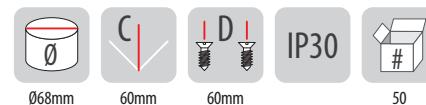


Remarks:

PK60 junction, for gypsum walls, deep, with screws



 A.0040A



Remarks:

PP

PP-flame retardant

## Halogen free series to 850°C, for gypsum walls, with cover

P070 for gypsum walls, with cover



 A.0008A



Remarks:

Norm: PN-EN 60670-1

P080 for gypsum walls, with cover



 A.0009A



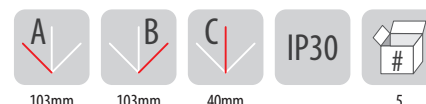
Remarks:

Norm: PN-EN 60670-1

P0 100x100x40 for gypsum walls, with cover



 A.0045A



Remarks:

Norm: PN-EN 60670-1

# Mounting boxes

## Halogen free series to 850°C, for gypsum walls, n-row

PP

PP-flame retardant

Norm: PN-EN 60670-1 Remarks: self-extinguishing

PK60 2-row for gypsum walls, with screws



 A.0010A



2x68mm



46mm



60mm



IP30



36

PK60 3-row for gypsum walls, with screws



 A.0041A



3x68mm



44mm



60mm



IP30



10

PK60 4-row for gypsum walls, with screws



 A.0047A



4x68mm



46mm



60mm



IP30



6

## Halogen free series to 850°C, for gypsum walls, n-row, deep

PP

Norm: PN-EN 60670-1 Remarks: self-extinguishing

PK60 2-row for gypsum walls, with screws, deep



 A.0010AG



2x68mm



60mm



60mm



IP30



12

PK60 3-row for gypsum walls, with screws, deep



 A.0041AG



3x68mm



60mm



60mm



IP30



6

PK60 4-row for gypsum walls, with screws, deep



 A.0047AG



4x68mm



60mm



60mm



IP30



6

PP

Halogen free series to 850°C, for gypsum walls, flush mounting, n-row

PP-flame retardant

Norm: PN-EN 60670-1 Remarks: self-extinguishing

PK60 5-row for gypsum walls, with screws



A.0048A



5x68mm



46mm



60mm



IP30



6

PP

PP-flame retardant

Norm: PN-EN 60670-1 Remarks: self-extinguishing

PK60 5-row for gypsum walls, with screws, deep



A.0048AG



5x68mm



60mm



60mm



IP30



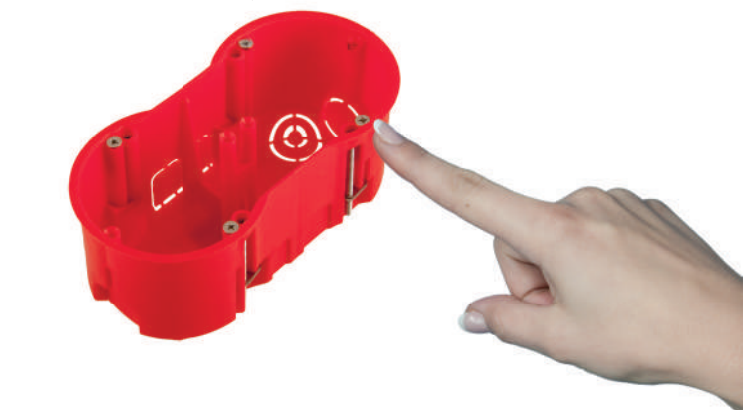
6



PAWBOL boxes have a special weakness spots with a diameter of Ø20, allowing easy installation of wires using casing pipes



The use of specific markers designating the drilling site, effectively facilitate installation of boxes



Complete product - boxes are equipped with screws for plastics, providing permanent seating of installed accessories

# Mounting boxes

## Flush mounting and junction boxes

IP30



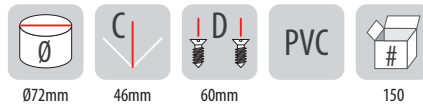
Norm: PN-EN 60670-1



Universal junction box UK1



**A.UK1-S**

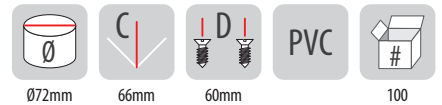


Remarks:

Universal junction box UK1, deep



**A.UK1-SH**



Remarks:

## Flush mounting and junction boxes

IP30



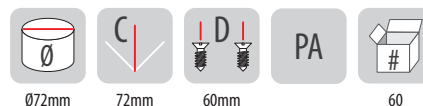
Norm: PN-EN 60670-1



Junction box KUP68 deep with screws



**KUP68H-2XXS**

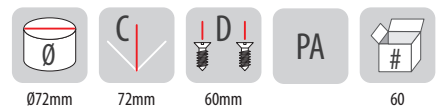


Remarks:

Junction box KUP68 deep without screws



**KUP68H-2XX**



Remarks:

IP30



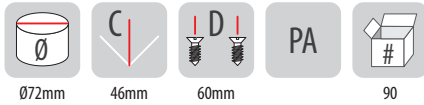
Norm: PN-EN 60670-1

## Flush mounting and junction boxes

Junction box KUP68 with screws



KUP68-02



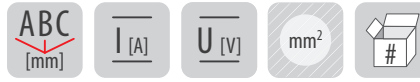
Remarks:

Terminal strips for KUP68 electro-installation mounting box, LZ 4x4 mm<sup>2</sup>



E.6801

E.6801C

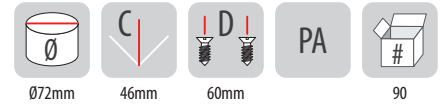


56,2/18,6/56,2 32 500 4 1  
Remarks: Norm: PN-EN 60947-7-1, available colours: gray RAL7035, black Thermoplastic

Junction box KUP68 without screws



KUP68-01



Remarks:



PA

IP30

PP-self-extinguishing

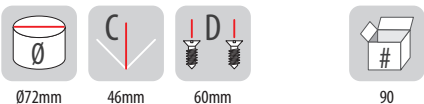
Norm: PN-EN 60670-1 Remarks: self-extinguishing

## Halogen free boxes, for gypsum walls

Box KUP68 for gypsum walls



A.KUP68-01

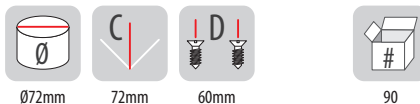


Remarks:

Box KUP68 for gypsum walls deep with screws

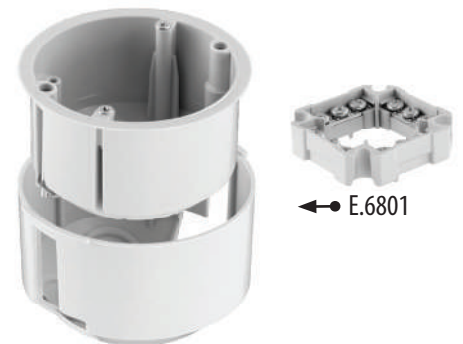


A.KUP68H-231

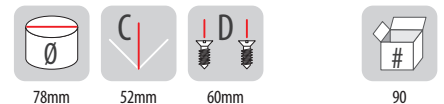


Remarks:

Box KUP68 for gypsum walls with special added outer sheat



A.KUP68-01-DV



Remarks:



# Mounting boxes

## Flush mounting boxes

PS

cover

PP

box

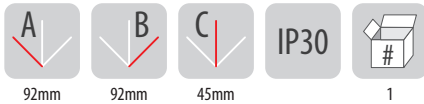
Norm: PN-EN 60670-1

Flush mounting box 92x92x45 with screws



**OL 10001**

650°



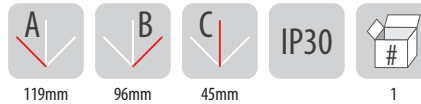
Remarks:

Flush mounting box 119x96x45 with screws



**OL 10002**

650°



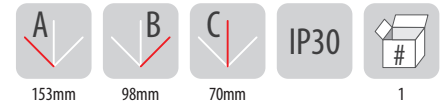
Remarks:

Flush mounting box 153x98x70 with screws



**OL 10003**

650°



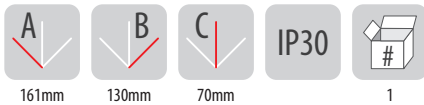
Remarks:

Flush mounting box 161x130x70 with screws



**OL 10004**

650°



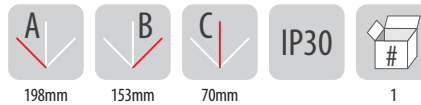
Remarks:

Flush mounting box 198x153x70 with screws



**OL 10005**

650°



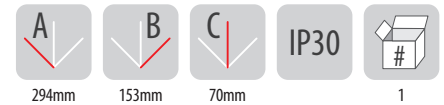
Remarks:

Flush mounting box 294x153x70 with screws



**OL 10006**

650°



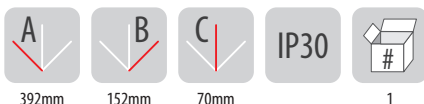
Remarks:

Flush mounting box 392x152x70 with screws



**OL 10007**

650°



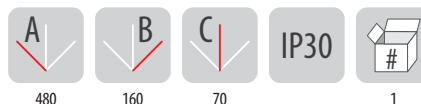
Remarks:

Flush mounting box 480x160x70 with screws



**OL 10008**

650°



Remarks:















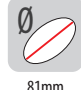












OL 10004 inside



## Accessories for mounting boxes

Accessories for mounting boxes - to adapt the boxes to individual customer needs

- cover for closing down the boxes when are used as a branching boxes
- cover used for boxes mounting in flush installations
- dissonance rings allows an increase the depth of the box (possibility to connect with each other dissonance rings)
- connectors for increasing the distance between the boxes in row

|   | Catalogue no. | Description   |   |   |  |
|---|---------------|---|---|---|--|
|    | A.0050        | Short adapter to A.0040<br><br>Remarks:<br>Distance between centers of junctions: 71 mm |   | PP  | <br>50                    |
|   | A.0051        | Long adapter to A.0040<br><br>Remarks:<br>Distance between centers of junctions: 81 mm  |   | PP  | <br>50                   |
|  | A.0037        | Cover for boxes P070  | <br>79mm | PP  | <br>100                 |
|  | A.0038        | Cover for boxes P080  | <br>90mm | PP  | <br>100                 |
|  | A.0039        | General purpose cover   | <br>97mm | PS  | <br>100                 |
|  | A.0054        | Cover for boxes PK60/PK60 lux   | <br>81mm | PP  | PP-uniepalniony <br>100 |
|  | A.0062        | Distance ring for PK60 - low  | <br>60mm | <br>12mm | PP <br>50               |
|  | A.0061        | Distance ring for PK60 - high   | <br>60mm | <br>24mm | PP <br>50               |
|  | A.0053        | Installation cover Ø60  | <br>60mm | PP  | <br>50                  |

# Mounting boxes

## Facing wall boxes - P type

PP

Norm: PN-EN 60670-1

P-1 with orange connection 4 x 6 mm<sup>2</sup>



A.0015ZP



Remarks: inside dimensions  
gland hole diameter: 20mm

P-1 with connection 4 x 2,5 mm<sup>2</sup>



A.0015



Remarks: inside dimensions  
gland hole diameter: 20mm

P-0 without insert



A.0014



Remarks: inside dimensions  
gland hole diameter: 20mm

## Facing wall boxes - P type

PP

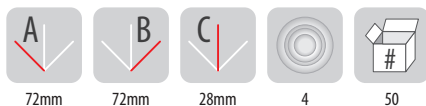
Norm: PN-EN 60670-1

P-2 with orange connection 4 x 6mm<sup>2</sup>



A.0017ZP

IP44



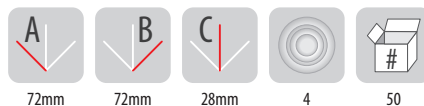
Remarks: inside dimensions  
gland hole diameter: 20mm

P-2 with connection 4 x 2,5 mm<sup>2</sup>



A.0017

IP44



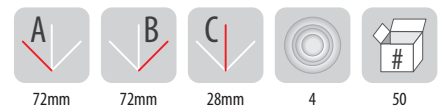
Remarks: inside dimensions  
gland hole diameter: 20mm

P-2 without terminals



A.0016

IP44



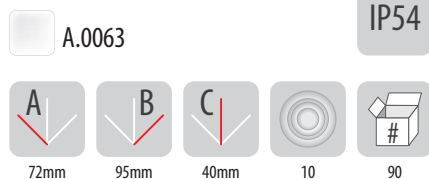
Remarks: inside dimensions  
gland hole diameter: 20mm

PE  
PP

## Facing wall, hermetic boxes

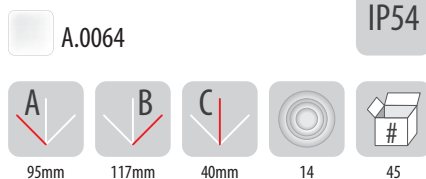
Norm: PN-EN 60670-1

### Hermetic boxes 90x45 klik



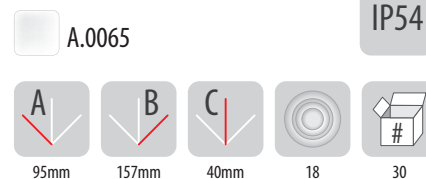
Remarks: colour: RAL7035  
gland hole diameter: 20mm, PG13,5

### Hermetic boxes 90x90 klik



Remarks: colour: RAL7035  
gland hole diameter: 20mm, PG13,5

### Hermetic boxes 90x130 klik



Remarks: colour: RAL7035  
gland hole diameter: 20mm, PG13,5

## Facing wall, hermetic boxes

Norm: PN-EN 60670-1

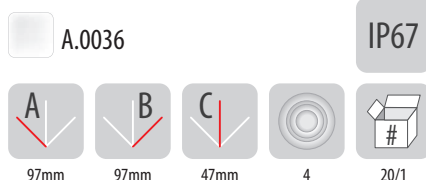
Hermetic boxes: PG16 / 5x4 mm<sup>2</sup> and 27P / 5x6 mm<sup>2</sup> have increased tightness - IP67, so you can use them on the outer walls of buildings exposed to atmospheric factors (rain, cold, etc.)

### Box PG16 / 5x4 mm<sup>2</sup>



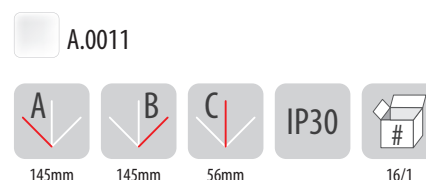
Remarks: colour: RAL7035, IP67, material: PA  
gland: PG16, inside dimensions. color: black: RAL9017, brown: RAL8011

### Box 27P / 5x6 mm<sup>2</sup>



Remarks: colour: RAL7035, IP67, material: PA  
gland: PG21, inside dimensions

### POI-28



Remarks: colour: RAL7035, IP30, material: PP  
gland hole diameter: 28mm, inside dimensions

# Mounting boxes

## Facing wall boxes IP54, halogen free series



Norm: PN-EN 60670-1

### PH 92x92 klik

5 terminals 4 mm<sup>2</sup>

with terminals  
4x6 mm<sup>2</sup>

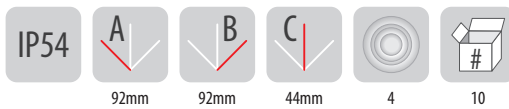
without terminals



A.0020

A.0018ZP

A.0018



Remarks: gland hole diameter: 21mm

### PH 92x92 klik

5 terminals 4mm<sup>2</sup>

with terminals  
4x6 mm<sup>2</sup>

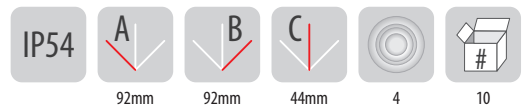
without terminals



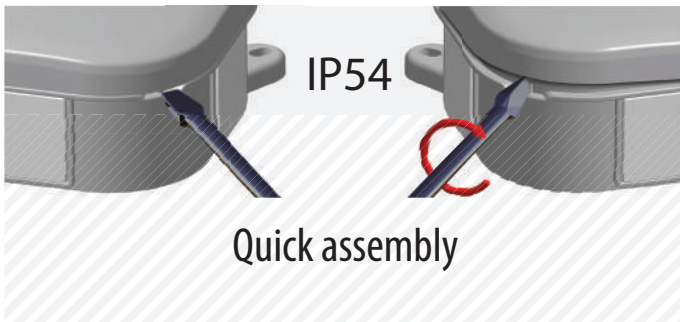
A.0020B

A.0018BZP

A.0018B



Remarks: gland hole diameter: 21mm



### PH 92x92 klik

5 terminals 4mm<sup>2</sup>

with terminals  
4x6 mm<sup>2</sup>

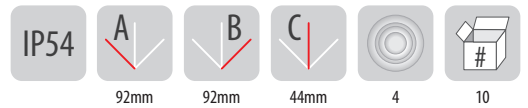
without terminals



A.0020BR

A.0018BRZP

A.0018BR



Remarks: gland hole diameter: 21mm



Facing wall boxes IP 54 PH 92 x 92 klik are registered in the Patent Office as industrial design. The original distinctive shape is generated by a stylized box elements.

Law of Registration No. 14330



## Control & measurement ground boxes

Control & measurement ground box  
Small



R.8170

Control & measurement ground box  
Sealed



R.8171

Control & measurement ground box  
Big



R.8172

| Catalogue no. | Control & measurement ground box Type | Dimensions [mm] | Material                      | Permissible pressure on the cover [kN/kg] | Input Ø [mm]        | Output Ø [mm]    | Cover fixing |
|---------------|---------------------------------------|-----------------|-------------------------------|---|---------------------|------------------|--------------|
| R.8170        | Small                                 | 198/198/200     | reinforced PP (polypropylene) | 2,1 / 210                                 | 126-102-84-64,5     | 120-96-74,5-59   | Snap-on      |
| R.8171        | Sealed                                | 285/285/233     |                               | 2,1 / 210                                 | 50(2x)-29(2x)-34-18 | 56(2x)-40        | 4 screws M6  |
| R.8172        | Big                                   | 290/290/296     |                               | 7,39 / 739                                | 140-126-102-84-64,5 | 135-120-96-76-59 | Snap-on      |

Products meet the standard: : PN-EN 124:2000 i PN-EN 62305-1/3

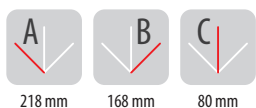
## Box for grounding connector

Box for grounding connector



R.8145

R.8145S



Remarks: R.8145S box have grey cover



### Advantages of box for grounding connector

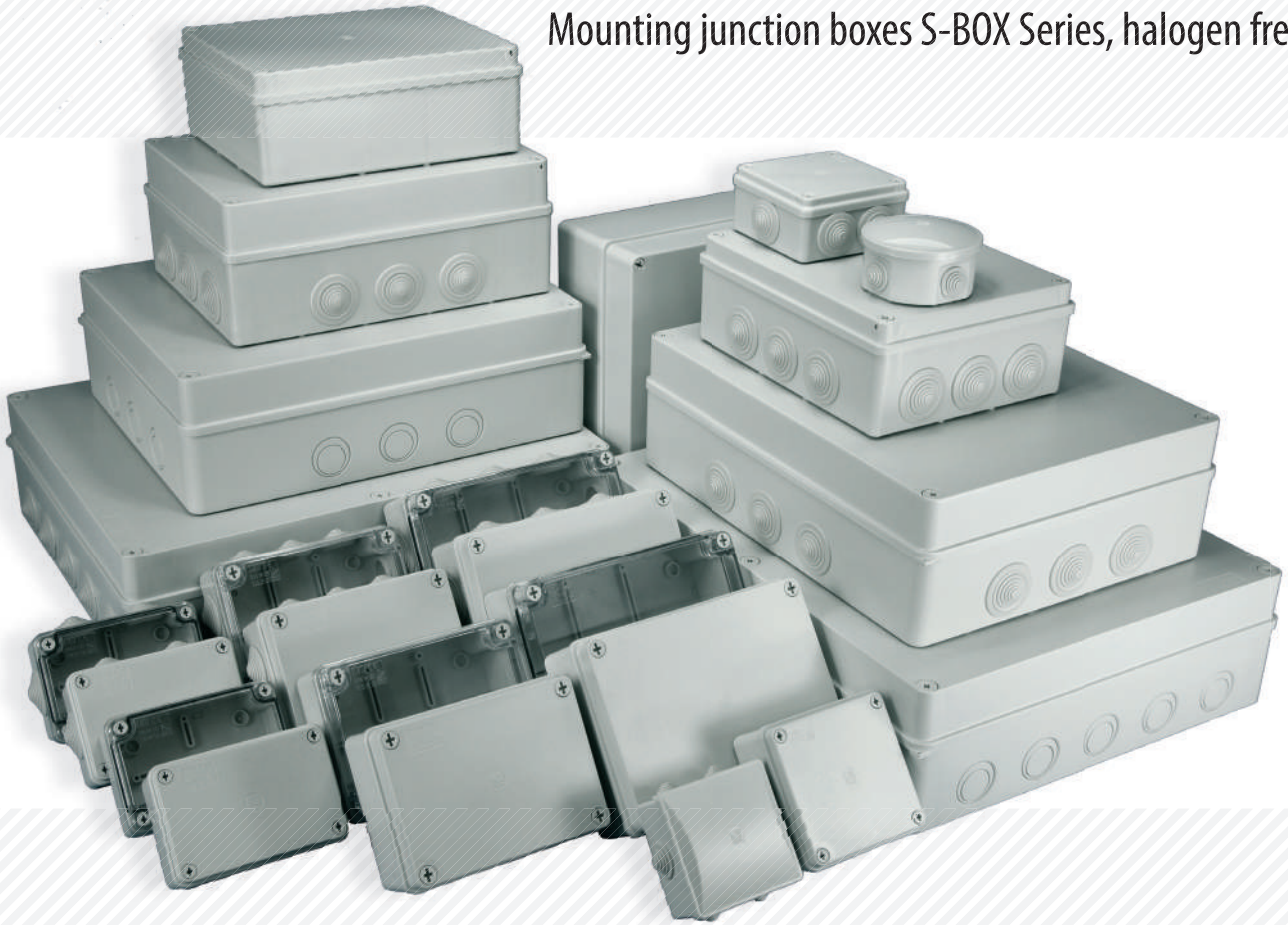
- » Cover resistant to UV radiation
- » Efficient protection of control connector from weather condition
- » Simple installation of control connector
- » Excellent solutions for installations in walls, even 15 cm thick insulations, thanks to smooth adjustment of depth
- » Simple design for ease of assembly



Adjustable depth

# Mounting boxes

## Mounting junction boxes S-BOX Series, halogen free



- » Easy assembly of electrical and electronic devices thanks to numerous mini pillars inside the box
- » Total resistance against corrosion of boxes, provide used plastic screws, it allows you to mount boxes in areas exposed to moisture
- » High degree of protection IP65 due to sealing up the connection between the cover and the base - with the exception of S-BOX 026 and 036 series. Mentioned series have comfortable and quick locking system by clicking up the cover on the box and degree of protection IP44
- » High mechanical and chemical resistance



### Wide range of choice - many possible of applications

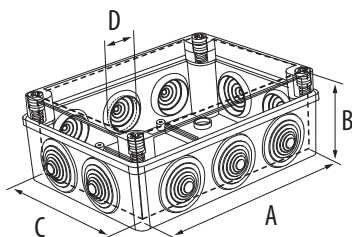
- » Transparent cover generates an increased number of possible applications, allowing for periodic inspections of the box without having to remove the cover
- » Transparent cover - high lampshade impact resistant (IK 10)



IK08

## Mounting junction boxes S-BOX Series, halogen free

Norm: PN-EN 60670-1, PN-EN 62208



Dimensions A, B, C - are inside dimensions of S-BOX

### S-BOX 80x40x40 klik

S-BOX 026 and 036 boxes have a convenient and quick locking system by clicking cover on the box, this provides IP44 protection class.



| Catalogue number | Type          | Cover  | Colour  | Dimensions |        |        | Glands | Type of gland | D [mm]<br>Gland hole diameter | IP   | Kind of material | Accessory | Quantity in package |
|------------------|---------------|--------|---------|------------|--------|--------|--------|---------------|-------------------------------|------|------------------|-----------|---------------------|
|                  |               |        |         | A [mm]     | C [mm] | B [mm] |        |               |                               |      |                  |           |                     |
| S-BOX 026        | Ø80x40 klik   | opaque | RAL7035 | Ø84        | 40     |        | 4      | square        | 22mm, PG 16                   | IP44 | PS/ABS           |           | 5                   |
| S-BOX 026B       | Ø80x40 klik   | opaque | white   | Ø84        | 40     |        | 4      | square        | 22mm, PG 16                   | IP44 | PS               |           | 5                   |
| S-BOX 026B0      | Ø80x40 klik   | opaque | white   | Ø84        | 40     |        | 4      | round         | 22mm, PG 16                   | IP44 | PS               |           | 5                   |
| S-BOX 036        | 80x80x40 klik | opaque | RAL7035 | 80         | 40     | 80     | 6      | square        | 20mm, PG 13,5                 | IP44 | PS/ABS           |           | 10                  |
| S-BOX 036B       | 80x80x40 klik | opaque | white   | 80         | 40     | 80     | 6      | square        | 20mm, PG 13,5                 | IP44 | PS               |           | 10                  |
| S-BOX 036B0      | 80x80x40 klik | opaque | white   | 80         | 40     | 80     | 6      | round         | 20mm, PG 13,5                 | IP44 | PS               |           | 10                  |

### S-BOX 100x100x50



| Catalogue number | Type                        | Cover  | Colour  | Dimensions |        |        | Glands | Type of gland | D [mm]<br>Gland hole diameter | IP   | Kind of material | Accessory | Quantity in package |
|------------------|-----------------------------|--------|---------|------------|--------|--------|--------|---------------|-------------------------------|------|------------------|-----------|---------------------|
|                  |                             |        |         | A [mm]     | C [mm] | B [mm] |        |               |                               |      |                  |           |                     |
| S-BOX 106        | 100x100x50 / 6 glands       | opaque | RAL7035 | 100        | 100    | 50     | 6      | round         | 28mm, PG 21                   | IP65 | PS/ABS           |           | 6/48                |
| S-BOX 106B       | 100x100x50 / 6 glands       | opaque | white   | 100        | 100    | 50     | 6      | round         | 28mm, PG 21                   | IP65 | PS/ABS           |           | 6/48                |
| S-BOX 116        | 100x100x50 / without glands | opaque | RAL7035 | 100        | 100    | 50     |        |               |                               | IP65 | PS/ABS           |           | 6/48                |
| S-BOX 116B       | 100x100x50 / without glands | opaque | white   | 100        | 100    | 50     |        |               |                               | IP65 | PS/ABS           |           | 6/48                |
| S-BOX 116BR      | 100x100x50 / without glands | opaque | brown   | 100        | 100    | 50     |        |               |                               | IP65 | PS/ABS           |           | 6/48                |

### S-BOX 120x80x50



| Catalogue number | Type                       | Cover       | Colour  | Dimensions |        |        | Glands | Type of gland | D [mm]<br>Gland hole diameter | IP   | Kind of material | Accessory | Quantity in package |
|------------------|----------------------------|-------------|---------|------------|--------|--------|--------|---------------|-------------------------------|------|------------------|-----------|---------------------|
|                  |                            |             |         | A [mm]     | C [mm] | B [mm] |        |               |                               |      |                  |           |                     |
| S-BOX 206        | 120x80x50 / 6 glands       | opaque      | RAL7035 | 120        | 80     | 50     | 6      | round         | 28mm, PG 21                   | IP65 | PS/ABS           |           | 6/60                |
| S-BOX 206B       | 120x80x50 / 6 glands       | opaque      | white   | 120        | 80     | 50     | 6      | round         | 28mm, PG 21                   | IP65 | PS/ABS           |           | 6/60                |
| S-BOX 206-P      | 120x80x50 / 6 glands       | transparent | RAL7035 | 120        | 80     | 50     | 6      | round         | 28mm, PG 21                   | IP65 | PS/ABS/PC        |           | 1                   |
| S-BOX 216        | 120x80x50 / without glands | opaque      | RAL7035 | 120        | 80     | 50     |        |               |                               | IP65 | PS/ABS           |           | 6/60                |
| S-BOX 216B       | 120x80x50 / without glands | opaque      | white   | 120        | 80     | 50     |        |               |                               | IP65 | PS/ABS           |           | 6/60                |
| S-BOX 216-P      | 120x80x50 / without glands | transparent | RAL7035 | 120        | 80     | 50     |        |               |                               | IP65 | PS/ABS/PC        |           | 1                   |

S-BOX installation boxes series:

S-BOX 190x140x70, S-BOX 240x190x90,  
S-BOX 300x220x120

are also available in improved version with mounting rail or with mounting plate made by galvanized and perforated metal sheet with thickness 1mm, has openings with Ø 3mm diameter.





## Mounting junction boxes S-BOX Series, halogen free

IK08

650°

Norm: PN-EN 60670-1, PN-EN 62208

## S-BOX 150x110x70



| Catalogue number | Type                         | Cover       | Colour  | Dimensions |        |        | Glands | Type of gland | D [mm]<br>Gland hole diameter | IP   | Kind of material | Accessory | Quantity in package |
|------------------|------------------------------|-------------|---------|------------|--------|--------|--------|---------------|-------------------------------|------|------------------|-----------|---------------------|
|                  |                              |             |         | A [mm]     | C [mm] | B [mm] |        |               |                               |      |                  |           |                     |
| S-BOX 306        | 150x110x70 / 10 glands       | opaque      | RAL7035 | 150        | 110    | 70     | 10     | round         | 28mm, PG 21                   | IP65 | PS/ABS           |           | 1/25                |
| S-BOX 306B       | 150x110x70 / 10 glands       | opaque      | white   | 150        | 110    | 70     | 10     | round         | 28mm, PG 21                   | IP65 | PS/ABS           |           | 1/25                |
| S-BOX 306H       | 150x110x140 / 10 glands      | opaque      | RAL7035 | 150        | 110    | 140    | 10     | round         | 28mm, PG 21                   | IP65 | PS/ABS           |           | 1/25                |
| S-BOX 306H-P     | 150x110x140 / 10 glands      | transparent | RAL7035 | 150        | 110    | 140    | 10     | round         | 28mm, PG 21                   | IP65 | PS/ABS/PC        |           | 1/25                |
| S-BOX 306-P      | 150x110x70 / 10 glands       | transparent | RAL7035 | 150        | 110    | 70     | 10     | round         | 28mm, PG 21                   | IP65 | PS/ABS/PC        |           | 1/25                |
| S-BOX 316        | 150x110x70 / without glands  | opaque      | RAL7035 | 150        | 110    | 70     |        |               |                               | IP65 | PS/ABS           |           | 1/25                |
| S-BOX 316B       | 150x110x70 / without glands  | opaque      | white   | 150        | 110    | 70     |        |               |                               | IP65 | PS/ABS           |           | 1/25                |
| S-BOX 316H       | 150x110x140 / without glands | opaque      | RAL7035 | 150        | 110    | 140    |        |               |                               | IP65 | PS/ABS           |           | 1/25                |
| S-BOX 316H-P     | 150x110x140 / without glands | transparent | RAL7035 | 150        | 110    | 140    |        |               |                               | IP65 | PS/ABS/PC        |           | 1/25                |
| S-BOX 316-P      | 150x110x70 / without glands  | transparent | RAL7035 | 150        | 110    | 70     |        |               |                               | IP65 | PS/ABS/PC        |           | 1/25                |

## S-BOX 190x140x70



| Catalogue number | Type                         | Cover       | Colour  | Dimensions |        |        | Glands | Type of gland | D [mm]<br>Gland hole diameter | IP   | Kind of material | Accessory            | Quantity in package |
|------------------|------------------------------|-------------|---------|------------|--------|--------|--------|---------------|-------------------------------|------|------------------|----------------------|---------------------|
|                  |                              |             |         | A [mm]     | C [mm] | B [mm] |        |               |                               |      |                  |                      |                     |
| S-BOX 406        | 190x140x70 / 10 glands       | opaque      | RAL7035 | 190        | 140    | 70     | 10     | round         | 37mm, PG29                    | IP65 | PS/ABS           |                      | 1/15                |
| S-BOX 406B       | 190x140x70 / 10 glands       | opaque      | white   | 190        | 140    | 70     | 10     | round         | 37mm, PG29                    | IP65 | PS/ABS           |                      | 1/15                |
| S-BOX 406H       | 190x140x140 / 10 glands      | opaque      | RAL7035 | 190        | 110    | 140    | 10     | round         | 28mm, PG 21                   | IP65 | PS/ABS           |                      | 1                   |
| S-BOX 406H-P     | 190x140x140 / 10 glands      | transparent | RAL7035 | 190        | 110    | 140    | 10     | round         | 28mm, PG 21                   | IP65 | PS/ABS/PC        |                      | 1/15                |
| S-BOX 406-P      | 190x140x70 / 10 glands       | transparent | RAL7035 | 190        | 140    | 70     | 10     | round         | 37mm, PG29                    | IP65 | PS/ABS/PC        |                      | 1/15                |
| S-BOX 416        | 190x140x70 / without glands  | opaque      | RAL7035 | 190        | 140    | 70     |        |               |                               | IP65 | PS/ABS           |                      | 1/15                |
| S-BOX 416B       | 190x140x70 / without glands  | opaque      | white   | 190        | 140    | 70     |        |               |                               | IP65 | PS/ABS           |                      | 1/15                |
| S-BOX 416H       | 190x140x140 / without glands | opaque      | RAL7035 | 190        | 140    | 140    |        |               |                               | IP65 | PS/ABS           |                      | 1                   |
| S-BOX 416H-P     | 190x140x140 / without glands | transparent | RAL7035 | 190        | 140    | 140    |        |               |                               | IP65 | PS/ABS/PC        |                      | 1                   |
| S-BOX 416-P      | 190x140x70 / without glands  | transparent | RAL7035 | 190        | 140    | 70     |        |               |                               | IP65 | PS/ABS/PC        |                      | 1/15                |
| S-BOX 416-PM     | 190x140x70 / without glands  | opaque      | RAL7035 | 190        | 140    | 70     |        |               |                               | IP65 | PS/ABS/PC        | steel mounting plate | 1/15                |
| S-BOX 416-P-PM   | 190x140x70 / without glands  | transparent | RAL7035 | 190        | 140    | 70     |        |               |                               | IP65 | PS/ABS/PC        | steel mounting plate | 1/15                |
| S-BOX 416-P-TH   | 190x140x70 / without glands  | transparent | RAL7035 | 190        | 140    | 70     |        |               |                               | IP65 | PS/ABS/PC        | rail TH35 - normal   | 1/15                |
| S-BOX 416-TH     | 190x140x70 / without glands  | opaque      | RAL7035 | 190        | 140    | 70     |        |               |                               | IP65 | PS/ABS/PC        | rail TH35 - normal   | 1/15                |

## S-BOX 240x190x90



| Catalogue number | Type                        | Cover       | Colour  | Dimensions |        |        | Glands | Type of gland | D [mm]<br>Gland hole diameter | IP   | Kind of material | Accessory              | Quantity in package |
|------------------|-----------------------------|-------------|---------|------------|--------|--------|--------|---------------|-------------------------------|------|------------------|------------------------|---------------------|
|                  |                             |             |         | A [mm]     | C [mm] | B [mm] |        |               |                               |      |                  |                        |                     |
| S-BOX 506        | 240x190x90 / 12 glands      | opaque      | RAL7035 | 240        | 190    | 90     | 12     | round         | 37mm, PG29                    | IP65 | PS/ABS           |                        | 1/20                |
| S-BOX 506B       | 240x190x90 / 12 glands      | opaque      | white   | 240        | 190    | 90     | 12     | round         | 37mm, PG29                    | IP65 | PS/ABS           |                        | 1/20                |
| S-BOX 506-P      | 240x190x90 / 12 glands      | transparent | RAL7035 | 240        | 190    | 90     | 12     | round         | 37mm, PG29                    | IP65 | PS/ABS/PC        |                        | 1/20                |
| S-BOX 506-TH     | 240x190x90 / 12 glands      | opaque      | RAL7035 | 240        | 190    | 90     | 12     | round         | 37mm, PG29                    | IP65 | PS/ABS           | rail TH35 - perforated | 1/20                |
| S-BOX 516        | 240x190x90 / without glands | opaque      | RAL7035 | 240        | 190    | 90     |        |               |                               | IP65 | PS/ABS           |                        | 1/20                |
| S-BOX 516B       | 240x190x90 / without glands | opaque      | white   | 240        | 190    | 90     |        |               |                               | IP65 | PS/ABS           |                        | 1/20                |
| S-BOX 516-P      | 240x190x90 / without glands | transparent | RAL7035 | 240        | 190    | 90     |        |               |                               | IP65 | PS/ABS/PC        |                        | 1/20                |
| S-BOX 516-PM     | 240x190x90 / without glands | opaque      | RAL7035 | 240        | 190    | 90     |        |               |                               | IP65 | PS/ABS           | steel mounting plate   | 1/20                |
| S-BOX 516-P-PM   | 240x190x90 / without glands | transparent | RAL7035 | 240        | 190    | 90     |        |               |                               | IP65 | PS/ABS/PC        | steel mounting plate   | 1/20                |
| S-BOX 516-P-TH   | 240x190x90 / without glands | transparent | RAL7035 | 240        | 190    | 90     |        |               |                               | IP65 | PS/ABS/PC        | rail TH35 - perforated | 1/20                |
| S-BOX 516-TH     | 240x190x90 / without glands | opaque      | RAL7035 | 240        | 190    | 90     |        |               |                               | IP65 | PS/ABS           | rail TH35 - perforated | 1/20                |



IK08

## Mounting junction boxes S-BOX Series, halogen free

Norm: PN-EN 60670-1, PN-EN 62208



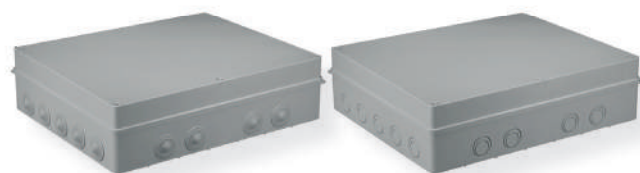
### S-BOX 300x220x120

| Catalogue number | Type                         | Cover  | Colour  | Dimensions |        |        | Glands | Type of gland | D [mm]<br>Gland hole diameter | IP   | Kind of material | Accessory              | Quantity in package |
|------------------|------------------------------|--------|---------|------------|--------|--------|--------|---------------|-------------------------------|------|------------------|------------------------|---------------------|
|                  |                              |        |         | A [mm]     | C [mm] | B [mm] |        |               |                               |      |                  |                        |                     |
| S-BOX 606        | 300x220x120 / 12 glands      | opaque | RAL7035 | 300        | 220    | 120    | 12     | round         | 37mm, PG29                    | IP65 | PS/ABS           |                        | 1/10                |
| S-BOX 616        | 300x220x120/without glands   | opaque | RAL7035 | 300        | 220    | 120    |        |               |                               | IP65 | PS/ABS           |                        | 1/10                |
| S-BOX 616-PM     | 300x220x120 / without glands | opaque | RAL7035 | 300        | 220    | 120    |        |               |                               | IP65 | PS/ABS           | steel mounting plate   | 1/10                |
| S-BOX 616-TH     | 300x220x120 / without glands | opaque | RAL7035 | 300        | 220    | 120    |        |               |                               | IP65 | PS/ABS           | rail TH35 - perforated | 1/10                |



### S-BOX 380x300x120

| Catalogue number | Type                         | Cover  | Colour  | Dimensions |        |        | Glands | Type of gland | D [mm]<br>Gland hole diameter | IP   | Kind of material | Accessory              | Quantity in package |
|------------------|------------------------------|--------|---------|------------|--------|--------|--------|---------------|-------------------------------|------|------------------|------------------------|---------------------|
|                  |                              |        |         | A [mm]     | C [mm] | B [mm] |        |               |                               |      |                  |                        |                     |
| S-BOX 706        | 380x300x120 / 12 glands      | opaque | RAL7035 | 380        | 300    | 120    | 12     | round         | 37mm, PG29                    | IP65 | PS/ABS           |                        | 1/6                 |
| S-BOX 716        | 380x300x120 / without glands | opaque | RAL7035 | 380        | 300    | 120    |        |               |                               | IP65 | PS/ABS           |                        | 1/6                 |
| S-BOX 716-PM     | 380x300x120 / without glands | opaque | RAL7035 | 380        | 300    | 120    |        |               |                               | IP65 | PS/ABS           | steel mounting plate   | 1/6                 |
| S-BOX 716-TH     | 380x300x120 / without glands | opaque | RAL7035 | 380        | 300    | 120    |        |               |                               | IP65 | PS/ABS           | rail TH35 - perforated | 1/6                 |



### S-BOX 460x380x120

| Catalogue number | Type                         | Cover  | Colour  | Dimensions |        |        | Glands | Type of gland | D [mm]<br>Gland hole diameter | IP   | Kind of material | Accessory | Quantity in package |
|------------------|------------------------------|--------|---------|------------|--------|--------|--------|---------------|-------------------------------|------|------------------|-----------|---------------------|
|                  |                              |        |         | A [mm]     | C [mm] | B [mm] |        |               |                               |      |                  |           |                     |
| S-BOX 806        | 460x380x120 / 18 glands      | opaque | RAL7035 | 460        | 380    | 120    | 18     | round         | 37mm, PG29                    | IP65 | PS/ABS           |           | 1/5                 |
| S-BOX 816        | 460x380x120 / without glands | opaque | RAL7035 | 460        | 380    | 120    |        |               |                               | IP65 | PS/ABS           |           | 1/5                 |



| Catalogue number | Type        | Cover  | Colour  | Dimensions |        |        | Glands | Type of gland | D [mm]<br>Gland hole diameter | IP   | Kind of material | Accessory | Quantity in package |
|------------------|-------------|--------|---------|------------|--------|--------|--------|---------------|-------------------------------|------|------------------|-----------|---------------------|
|                  |             |        |         | A [mm]     | C [mm] | B [mm] |        |               |                               |      |                  |           |                     |
| 0L20043          | 250x200x160 | opaque | RAL7035 | 250        | 200    | 160    |        |               |                               | IP56 | ABS              |           | 1                   |
| 012.CA.G         | 310x230x160 | opaque | RAL7035 | 310        | 230    | 160    |        |               |                               | IP56 | ABS              |           | 1                   |